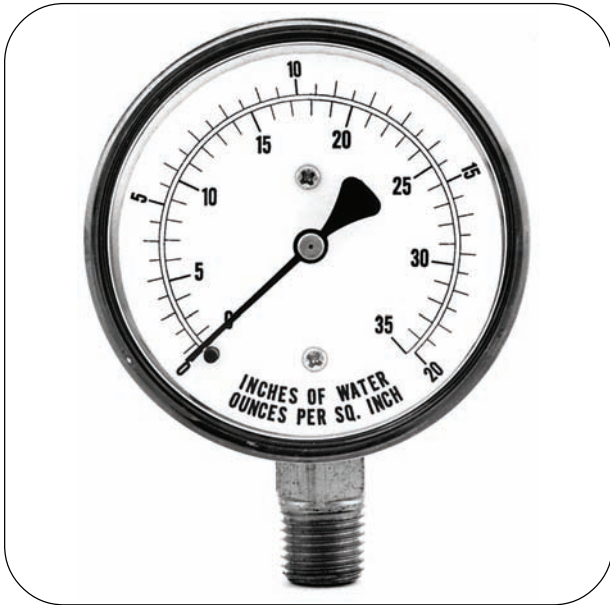


MODEL 55

LOW PRESSURE DIAPHRAGM-ACTUATED UTILITY PRESSURE GAUGES

Designed for use with air, gas, oil, water or any medium not corrosive to brass or bronze and where pressure of less than 10 psi is to be measured.



SPECIFICATIONS:

Dial Size:	2-1/2"
Accuracy:	±3-2-3% - ANSI Grade B
Case:	Black Painted Steel (dry only)
Socket:	Brass
Capsule:	Phosphor Bronze Diaphragm
Movement:	Brass
Lens:	Acrylic
Pointer:	Aluminum
Dial:	Aluminum
Connection:	1/4" NPT Lower or Center Back
Restrictor:	Standard
Zero Adjust:	Lower Mount Only
Range:	See Range Chart

Estimated Shipping Weight	
DIAL SIZE	DRY
2-1/2"	9 oz.

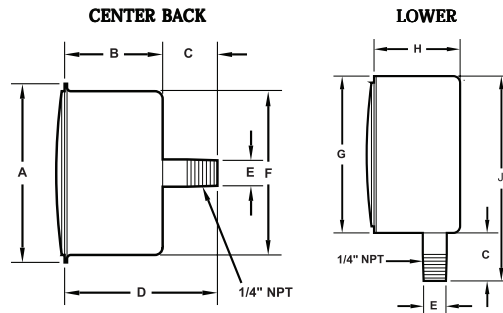
➤ AVAILABLE OPTIONS

- Oxygen Cleaning (dry)

➤ AVAILABLE CASE STYLES AND DIMENSIONS:

➤ STANDARD RANGES:

CODE = RANGE	INTERVALS	DIVISIONS
B1A = 0-5 psi	1	.1
B4A = 0-10 psi	2	.2
B4P = 0-10 IW	2	.2
B7P = 0-15 IW	3	.2
C6P = 0-30 IW	5	.5
D6P = 0-60 IW	10	1
D9P = 0-100 IW	20	2
E3P = 0-150 IW	30	2
E5P = 0-200 IW	20	2
B7R = 0-15 IW/oz.	20	2
C8R = 0-35 IW/oz.	5	1
D6R = 0-60 IW/oz.	10	1
D9R = 0-100 IW/oz.	20	2



DIAL	A	B	C	D	E	F	G	H	J
2-1/2"	2.85" (72,4mm)	1.60" (40,6mm)	.85" (21,6mm)	2.45" (62,2mm)	.55" (14mm)	2.60" (66mm)	2.60" (66mm)	1.70" (43,2mm)	3.45" (87,6mm)

➤ HOW TO ORDER:

To Build A Part Number: Select one code from each column to build your gauge.

DIAL	MODEL CODE	TUBE & SOCKET	CASE	CONN. SIZE	CONN. LOCATION	CONN. TYPE	RANGE & SCALE	OPTIONS
2-1/2"	25 55	B = Brass	C = Black Painted Steel	4 = 1/4"	L = Lower C = Center Back	1 = NPT	See Range Chart	Oxygen Cleaning *

Example: **Specs:** 2-1/2", Model 55B, Brass, Black Painted Steel, 1/4" Lower, NPT, 0-5 psi

Select:	25 55	B	C	4	L	1	B1A
----------------	-------	---	---	---	---	---	-----

Ordering Format: 2555BC4L1B1AC

* Oxygen cleaning is sold separately. Order part number 10000006.